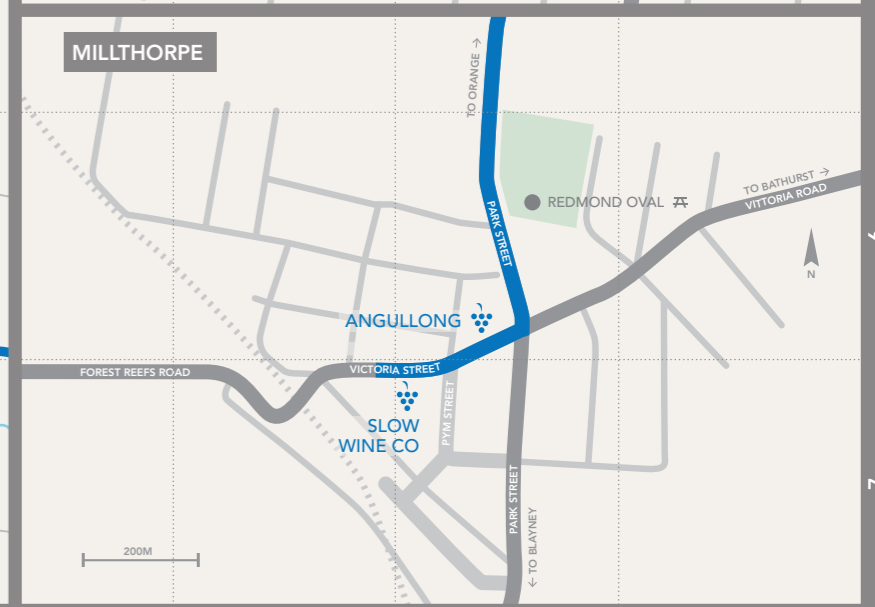
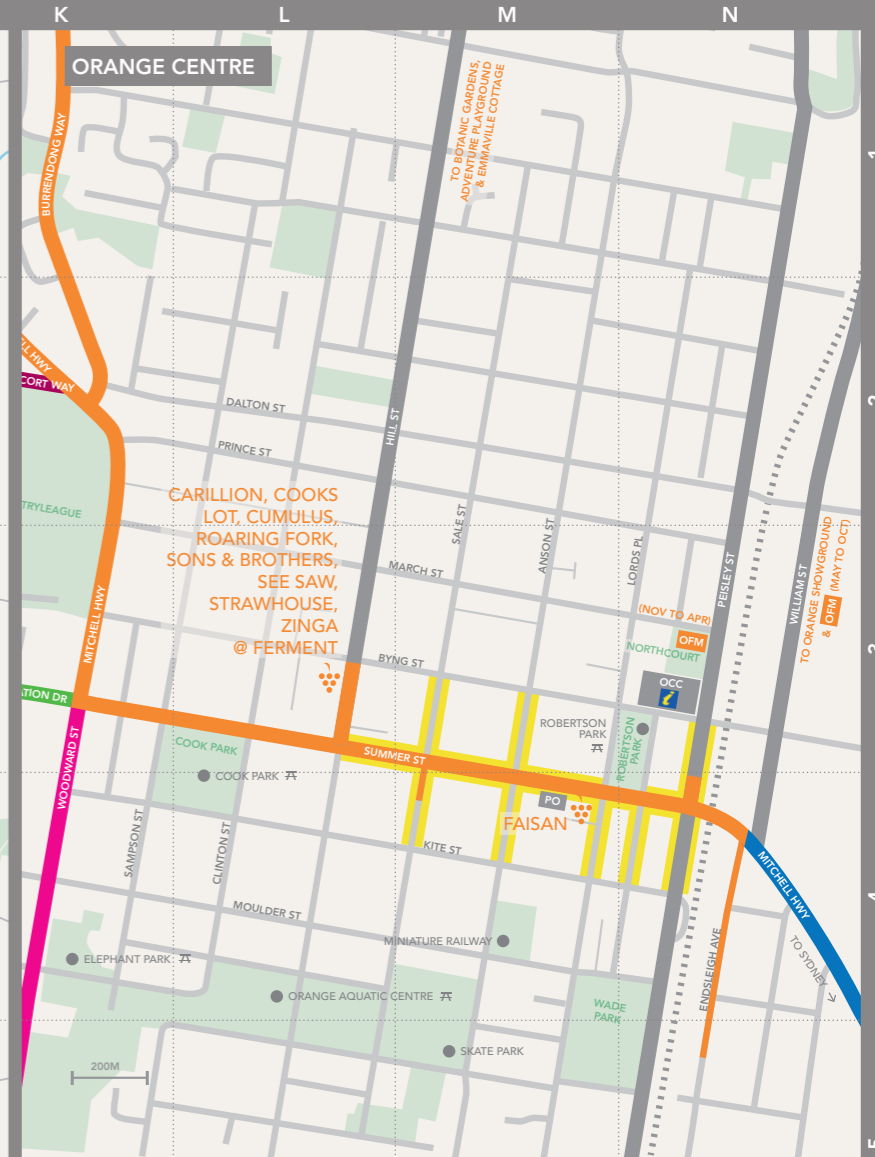
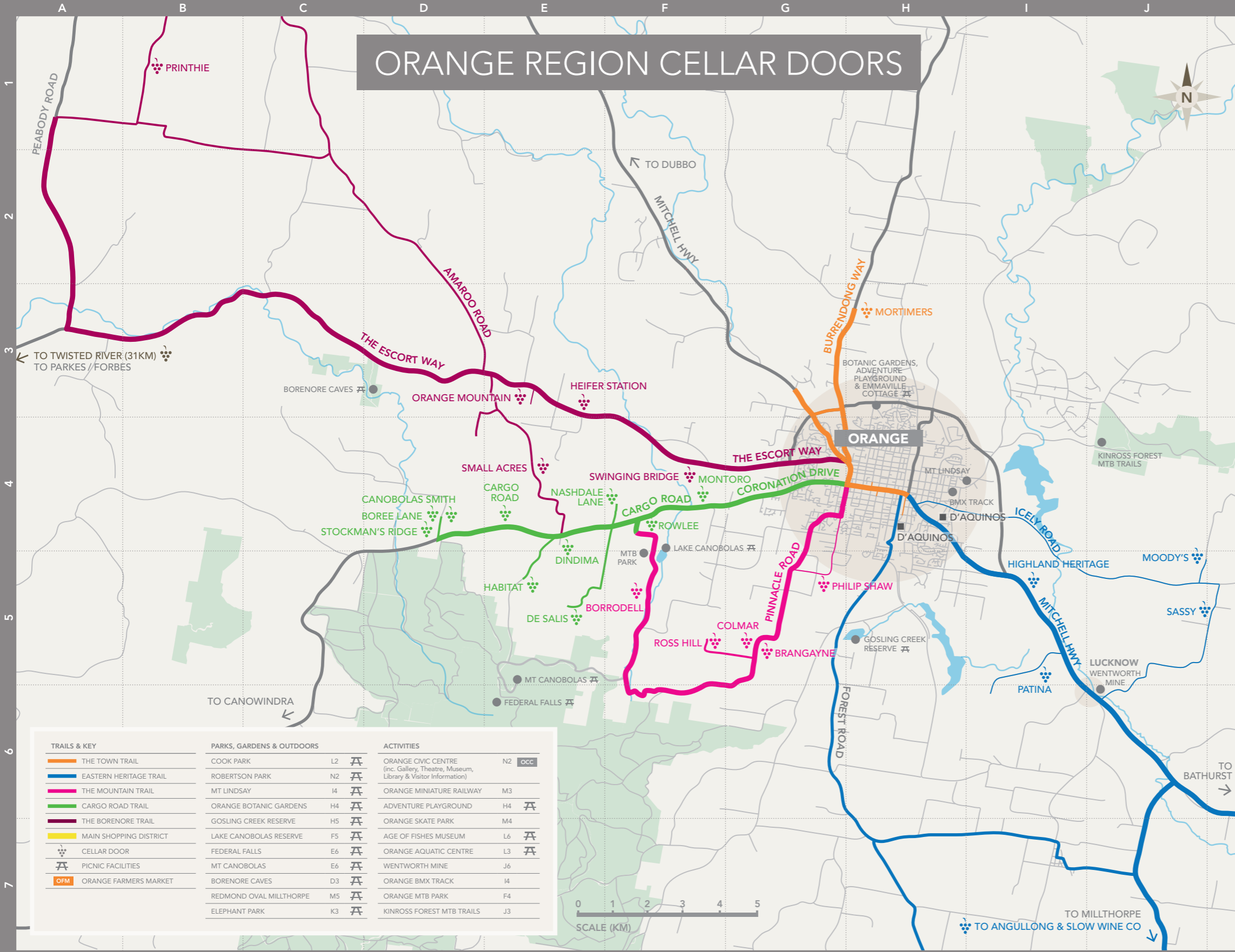


# ORANGE REGION CELLAR DOORS



TRAILS & KEY		PARKS, GARDENS & OUTDOORS		ACTIVITIES	
	THE TOWN TRAIL		COOK PARK L2		ORANGE CIVIC CENTRE (inc. Gallery, Theatre, Museum, Library & Visitor Information) N2 OCC
	EASTERN HERITAGE TRAIL		ROBERTSON PARK N2		ORANGE MINIATURE RAILWAY M3
	THE MOUNTAIN TRAIL		MT LINDSAY I4		ADVENTURE PLAYGROUND H4
	CARGO ROAD TRAIL		ORANGE BOTANIC GARDENS H4		ORANGE SKATE PARK M4
	THE BORENORE TRAIL		GOSLING CREEK RESERVE H5		AGE OF FISHES MUSEUM L6
	MAIN SHOPPING DISTRICT		LAKE CANOBOLAS RESERVE F5		ORANGE AQUATIC CENTRE L3
	CELLAR DOOR		FEDERAL FALLS E6		WENTWORTH MINE J6
	PICNIC FACILITIES		MT CANOBOLAS E6		ORANGE BMX TRACK I4
	ORANGE FARMERS MARKET		BORENORE CAVES D3		ORANGE MTB PARK F4
			REDMOND OVAL MILLTHORPE M5		KINROSS FOREST MTB TRAILS J3
			ELEPHANT PARK K3		



THE MOUNTAIN TRAIL			CARGO ROAD TRAIL			THE BORENORE TRAIL			THE TOWN TRAIL			EASTERN HERITAGE TRAIL		
Winery	MAP	TEL	Winery	MAP	TEL	Winery	MAP	TEL	Winery	MAP	TEL	Winery	MAP	TEL
Philip Shaw Wines	G5	02 6362 0710	Montoro	F4	02 6365 3126	Swinging Bridge	F4	0487 002 938	Ferment: Carillon, Cooks Lot, Cumulus, Roaring Fork, Sons & Brothers, See Saw, Strawhouse, Zinga	L3	02 6360 4833	Moody's Wines	J5	02 6365 9117
Brangayne of Orange	G5	02 6365 3229	Rowlee	F4	0438 059 108	Heifer Station	E3	02 6365 2275				Sassy Wines	J5	0409 311 395
Colmar Estate	G5	0419 977 270	Nashdale Lane	F4	0458 127 333	Orange Mountain Wines	E3	02 6365 2626	Faisan Estate Wines	M4	0458 890 391	Highland Heritage Estate	I5	02 6363 5602
Ross Hill Wines	F5	02 6365 3223	De Salis Wines	E5	0403 210 703	Small Acres Cyder	E4	02 6365 2286	Mortimers of Orange	H3	02 6365 8513	Patina	I5	0429 457 575
Borrodell Vineyard	F5	02 6365 3425	Dindima Wines	E4	02 6365 3388	Printhie Wines	B1	02 6366 8422				Angullong	M6	02 6366 4300
			Habitat Vineyard	E5	02 6365 3598	<b>CENTRAL RANGES CELLAR DOOR</b>						Slow Wine Co.	M7	0412 667 455
			Cargo Road Winery	E4	0428 656 100	Twisted River	-	02 6364 5447						
			Stockman's Ridge	D4	02 6365 6212									
			Boree Lane Wines	D4	0410 624 203									
			Canobolas Smith Wines	D4	02 6365 6113									

For further information please visit [www.orangeregiontourism.com.au](http://www.orangeregiontourism.com.au) or call local visitor information centres:  
 Orange 1800 069 466  
 Blayney 02 6368 3534  
 Cabonne 02 6344 1008.